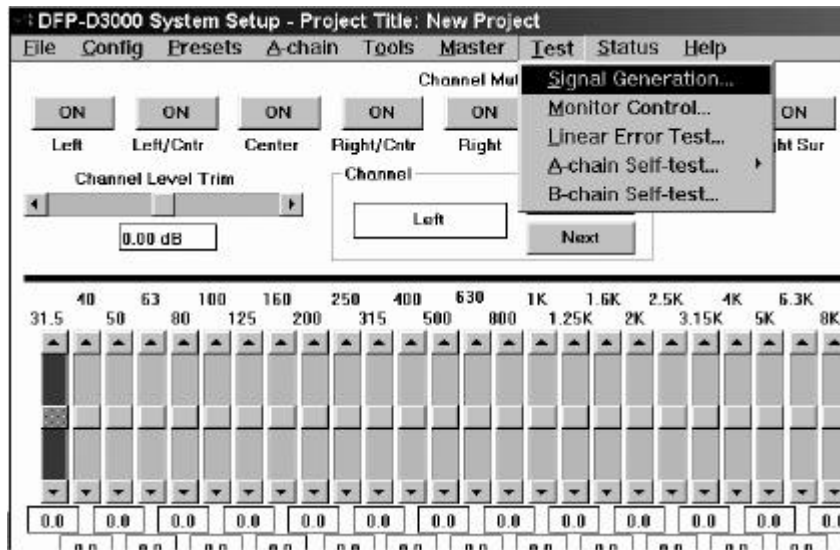


Tech Note

Using Setup Software to test loudspeaker wiring, and cautions regarding use of Theatre Diagnostics.

Product: DFP-D3000.
 S/N: All units with firmware v2.74.
 Document: **TN99091501**, CC/MO
 Summary: Explains the recommended way to use Setup Software functions for loudspeaker testing and how to avoid problems with front panel Theatre Diagnostics.

The recommended means of using provisions of the DFP-D3000 to create output signals for checking that specific Decoder outputs arrive at the desired loudspeaker cabinets is to use the internal test signal generator controlled by Setup Software. This function is invoked through the **Test** pull-down menu of the Setup Software's main screen. Select **Test>Signal Generation...** and select the type of signal desired, such as pink noise. Also click to select the **Cycle signal through channels** option. You can also select the number of seconds you want the signal to remain at each channel's output.



In the past, theatre installers may have used the Theatre Diagnostics (B-Chain self-test) functions available through front panel menus of the DFP-D3000 to create output signals for checking that specific Decoder outputs arrive at the desired loudspeaker cabinets. However, in version 2.74 of DFP-D3000 firmware the Theatre Diagnostics function is not implemented. Attempting to use these functions will cause the DFP-D3000 to lock up. No damage is done, but the unit must be powered OFF and then back ON to clear this condition.